

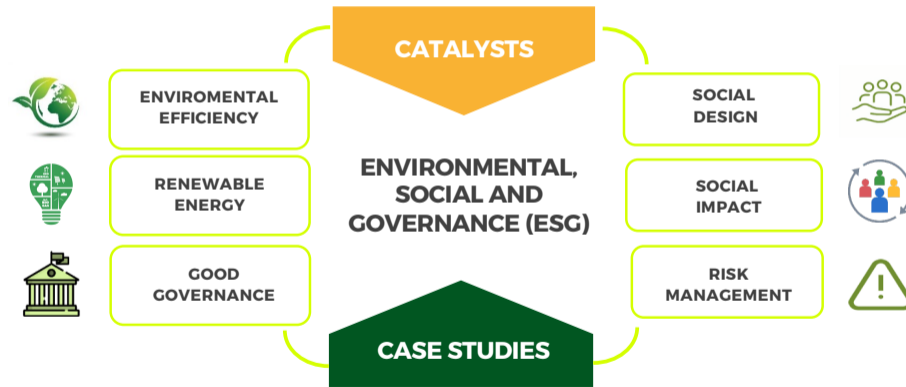


**Transforming  
University Property  
Portfolios:  
A Catalyst for ESG  
Advancement**

**wot**

wedo tomorrow

# OUR DISCUSSION



# WHAT IS ESG AND IS IT HERE TO STAY?



Source: United Nations

# SUSTAINABLE DEVELOPMENT GOALS (SDGs)



Source: United Nations

# UNIVERSITY – SDGs



Source: United Nations

# WHY IS ESG IMPORTANT FOR UNIVERSITIES?



Responsible to their students, faculty, staff and alumni;



Make investment decisions = sustainable and socially responsible;



Endowment used in a way consistent with mission and values; and



Attract student and donors concerned with socially and environmentally responsible entities

**“ESG is not a trade-off with financial returns; it's a smart strategy that can enhance long-term performance.”**

*Larry Fink, CEO of BlackRock, in his 2020 letter to CEOs.*

# GOVERNANCE

## SUSTAINABILITY



Governance



### Agreements and Policies

- Shareholder rights
- Delegation of Authority
- Ethical Standards: Anti-corruption, donation, anti-child labour practices
- Procurement
- Board Diversity
- Stakeholder engagement
- Remuneration
- Corporate Social Investment
- Environmental Policy



# WHY ESG PROCUREMENT?



## The triple bottom line of sustainable procurement



siivo.com

- **Integrating ESG factors into procurement and supply chain management.**
- **Promotion of responsible sourcing, reduce environmental impact, and ensure ethical business practices.**
- **Foster sustainability, minimize risks, and increase transparency in their supply chains.**
- **Assists universities with aligning to their values and goal, promoting a positive brand image and gain a competitive advantage.**



# SOCIAL IMPACT



Universities are anchors for their communities and they are highly involved in fostering social development.

It is a significant local employer and can support their communities by buying local products and investing in local community services.

Universities provide the greater community with much needed library, arts and physical education facilities.

# SOCIAL IMPACT - UNIVERSITY OF WITWATERSRAND

**BEFORE**



**AFTER**



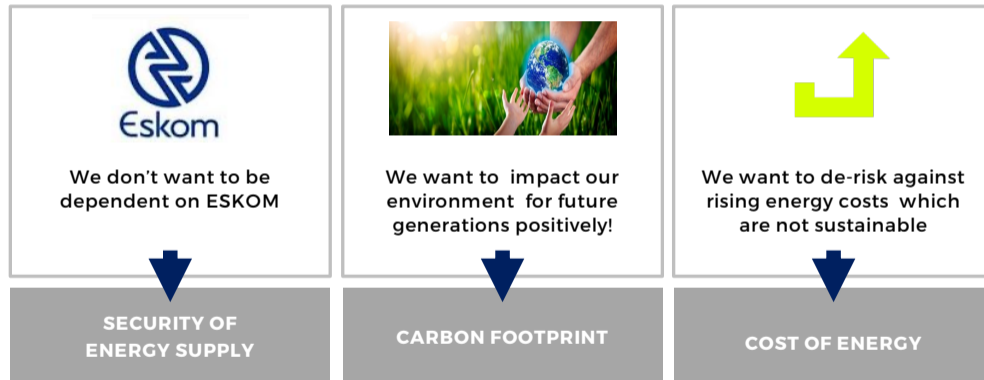
Source : Wits Website

# ENVIRONMENT

Universities can provide trained manpower and knowledgeable expertise to solve critical environmental problems:

<b>Greenhouse gas emissions</b>	<b>Energy</b> (Renewable fuels)	<b>Water Management</b>
<b>Energy</b> (Energy efficiency)	<b>Waste</b> (Recycling processes)	<b>Climate change</b>
<b>Carbon footprint</b>	<b>Biodiversity loss</b>	

# ENERGY TRILEMMA



# BENEFITS IN IMPLEMENTING ESG POLICIES AND PRACTICES

- Attraction and retention of students, faculty and staff
- Enhancing university reputation
- Improving the university's financial performance
- Reducing the university's environmental impact and supporting sustainability.
- Creating opportunities for students to learn about and engage with sustainability and social responsibility issues
- Building stronger relationships with the local community and other stakeholders.

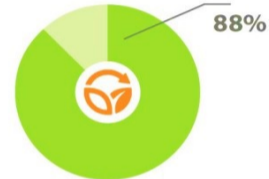
# BARRIERS IN IMPLEMENTING ESG POLICIES AND PRACTICES

- Dedicated resources and support to implement ESG initiatives.
- Developing a clear and comprehensive ESG strategy which aligns with the university's strategy
- Communicating the importance of ESG to students, faculty, staff, and other stakeholders.
- Measuring the impact and effectiveness of ESG initiatives.
- Ensuring that ESG practices are integrated into all aspects of the university's operations.
- Managing potential conflicts between ESG goals and other priorities.

# HOW DO WE MEASURE PERFORMANCE OR SUCCESS?

ESG Reporting is typically done by publishing a sustainability report. ESG disclosure frameworks:

United Nations (UN) SDGs	UN Global Compact (UNGC)
UN Guiding Principles Reporting Framework (UNGPRF)	Global Reporting Initiative (GRI) Sustainability Reporting Standards
Sustainability Accounting Standards Board	King IV Codes of Governance
CRISA – Code for Responsible Investing SA	MSCI ESG Index

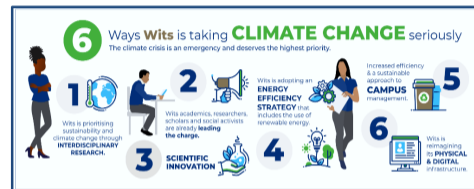


According to 88% of the studies "solid ESG practices result in better operational performance".

# CASE STUDIES

## ENVIRONMENTAL: ENERGY

University of California added 2.6 million feet of new building space and 6300 new students, while reducing energy consumption by 23%.



## ENVIRONMENTAL AND SOCIAL

- UP is committed to recycling resources, minimising waste, protecting the environment, promoting biodiversity, engaging with communities and forging local and global partnerships.
- UP investigates opportunities for alternative energy sources, low-carbon technology, and renewable energy installations.
- UP has a water management plan it has committed to various water conservation projects.



# CASE STUDIES

## ENVIRONMENTAL: POLLUTION AND ENERGY

- Embracing Sustainability and Net Zero Carbon strategy enable a culture of sustainable development across the Nottingham Trent University community.
- Retrofitting, Solar PV installations, LED lighting, and window replacement.

## ENVIRONMENTAL, SOCIAL & GOVERNANCE

### University of Stellenbosch align to UN SDG's.

#### Initiatives include:

- Education for all
- Social and gender justice
- Environment and sustainability
- Employment and inclusive economic development
- Food security and health
- Resources and infrastructure
- Safety, security and good

# CASE STUDIES

**By 2025, two-thirds of the world's population may face water shortages.**

*Source: worldwildlife.org*

## **ENVIRONMENTAL: WATER**

**University of Oxford's strategy is to reduce water consumption through efficient use and rainwater harvesting.**

The staff and students play an active role.

The university also works with their water supplier to identify opportunities to improve water efficiency.







# WORLDS' MOST SUSTAINABLE UNIVERSITIES

**The Times Higher Education's Impact Rankings 2022 is the world's only list measuring universities' contributions against the UN's Sustainable Development Goals.**

**Globally, 1,400 universities from 106 countries or regions were assessed in terms of research, stewardship, outreach and teaching.**

*SOURCE: World Economic Forum, December 2022*

*THE Impact Rankings 2022: the top 10*

2022 rank	Institution	Country/region	Score
1	Western Sydney University	Australia	99.1
2	Arizona State University (Tempe)	United States	98.5
3	Western University	Canada	97.8
=4	King Abdulaziz University	Saudi Arabia	97.5
=4	Universiti Sains Malaysia	Malaysia	97.5
6	University of Auckland	New Zealand	96.7
7	Queen's University	Canada	96.6
8	Newcastle University	United Kingdom	96.5
9	University of Manchester	United Kingdom	96.4
10	Hokkaido University	Japan	96.2



# CALL TO ACTION: GREEN IS THE NEW LEAN – 5R's

## RETHINK

Holistic approach including data, behaviour, reimagining ways of work, spaces, precincts and placemaking.

Energy market is moving from a vertical to a horizontal supply.

Water scarcity.

## RESTORE

### Existing Buildings

- Generators
- Inverters
- LED Lighting
- Education and Advocacy
- Reduce Water Temperatures
- Energy-Efficient Appliances
- Emergency plan

### New Build

- Solar PV Panels
- Energy Efficient Lighting Design
- LED Lighting
- Sensors
- Carbon friendly building materials
- Energy-Efficient Appliances

## REDUCE

- Energy Audit
- Energy Management
- Energy-Efficient HVAC, Water Heating, Landscaping
- Smart Thermostats
- Insulation and Weatherproofing:
- Energy-Efficient Windows
- Use Natural Light in new builds
- Energy Conservation Habits
- GBCSA Standards
- Grey water systems
- Rainwater harvesting
- Education
- Water sensors
- Boreholes
- Low-cost water saving devices.
- Reduce, Reuse, Recycle

## REVITALISE

- Sustainable Design
- Green construction practices
- Green Building Certifications
- Retrofits and upgrades

## RENEW

Experimentation with alternative energy sources, hydrology, hydro-geology, financial models, partnerships, pilots, battery storage.

- Solar Power
- Wind Power
- Hydropower
- Biomass Energy
- Geothermal Energy
- Tidal & Wave Energy
- Hydrogen

# WE ARE ALL ABOUT THE FUTURE

Far from conventional thinking, forward-thinking and a bit brave!

**Wedo Tomorrow** specializes in investing in property, property development, and **consulting services**. Our name embodies our dedication to innovation and finding fresh approaches to address challenges in a constantly evolving world. With our vast knowledge and experience, we actively seek opportunities to create value in both the private and public sectors.

Our business strategy **focuses on seeking customer-centric and transformative projects**. As a socially conscious enterprise, we take pride in being a **100% Black-owned entity with significant female ownership**.

The team has a track record of successful projects. Most recent projects within the higher education sector include, collaborating with the University of Western Cape to formulate a Student Accommodation Strategy, which received the seal of approval, pioneering the development of a Sustainable Energy Security Strategy and Strategic Approach and successfully securing a property deal in Tygervalley.



# CONTACT US



“ Our focus is on tomorrow. A socially conscious business committed to making a positive impact.”



Narriman Taliep



+27 83 298 3015



narriman.taliep@wedotomorrow.co.za



wedotomorrow.co.za



WDT @ Workshop 17, Newlands  
Level 3, Snakepit Building  
146 Campground Road  
Newlands, Cape Town 7700

