



RICE UNIVERSITY

Data-Informed Decision Making

Higher Education

Think back...

From your perspective,
what changes in the
past 10 years have
impacted our data
world?



RICE UNIVERSITY



Outline and Takeaways

- Who?
- What? – The Problem / Challenges
- Where? – The Data
- How? – The Approach
- Lessons Learnt





RICE UNIVERSITY

- 8,800 Students
- 2,750 Degrees Awarded
- < 9% Acceptance Rate
- 6:1 Student-to-Faculty Ratio

- \$1.03 Billion Budget
- \$216M Research
- \$8 Billion Endowment



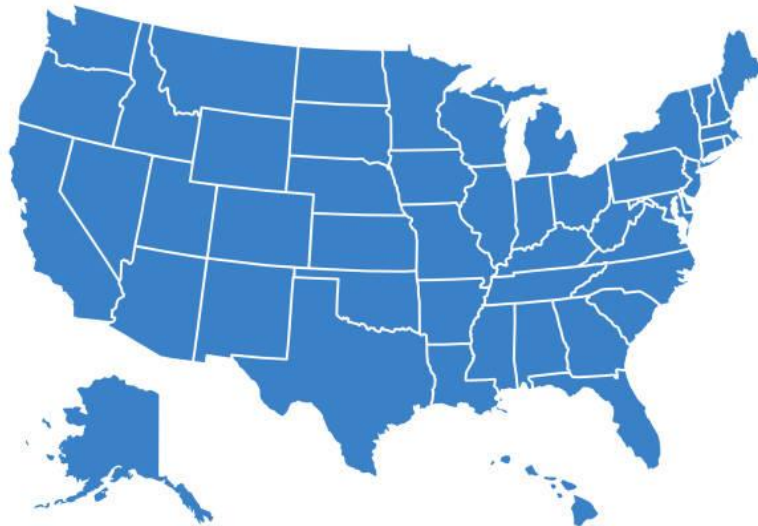


TEXAS

The University of Texas at Austin



RICE



Oregon State
University

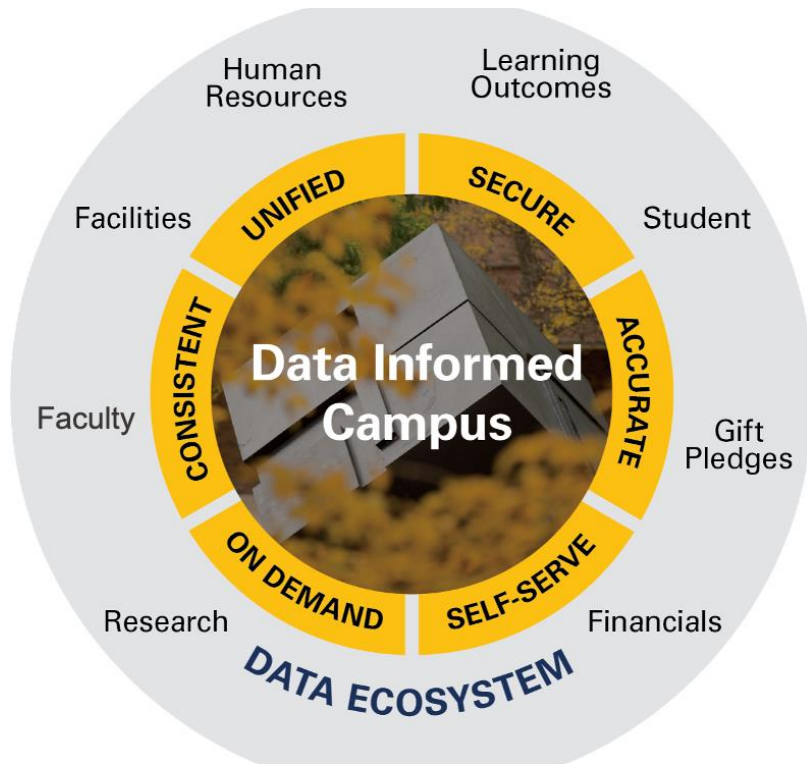


RICE UNIVERSITY

Our Data Vision

Empowered community of data consumers who have on-demand, role-based access to enterprise data.

Envision a University Culture Where...



RICE UNIVERSITY

We are swimming in data



RICE UNIVERSITY



but starving for insights...



Problems





RICE UNIVERSITY



Data not transparent, needs translation

Data rich, information-poor



RICE UNIVERSITY



RICE UNIVERSITY



Reliable transaction systems; weak intelligence



Programmers required to extract information



Privacy and sensitivity of data enablement



RICE UNIVERSITY

Data exchanges with other systems



RICE UNIVERSITY

Problems - Recap

Data not transparent, needs translation

Data rich, information-starved

Reliable transaction systems; weak intelligence

Programmers required to extract information

Privacy and sensitivity of data enablement

Data exchanges with other systems

WHERE ARE WE
GOING

AND HOW DO WE GET THERE?



User-Centric Focus



Students



Faculty



Staff



Alumni



What would be helpful for *you* to answer?

What is our annual production for development?

What is our undergraduate student demographics?

What is our staff-to-faculty ratio?

How many student credit hours were taught per faculty last year?

What is our research expenditure per faculty member?

What is our faculty retention rate?

How many students have visited Health Services this winter?



RICE UNIVERSITY

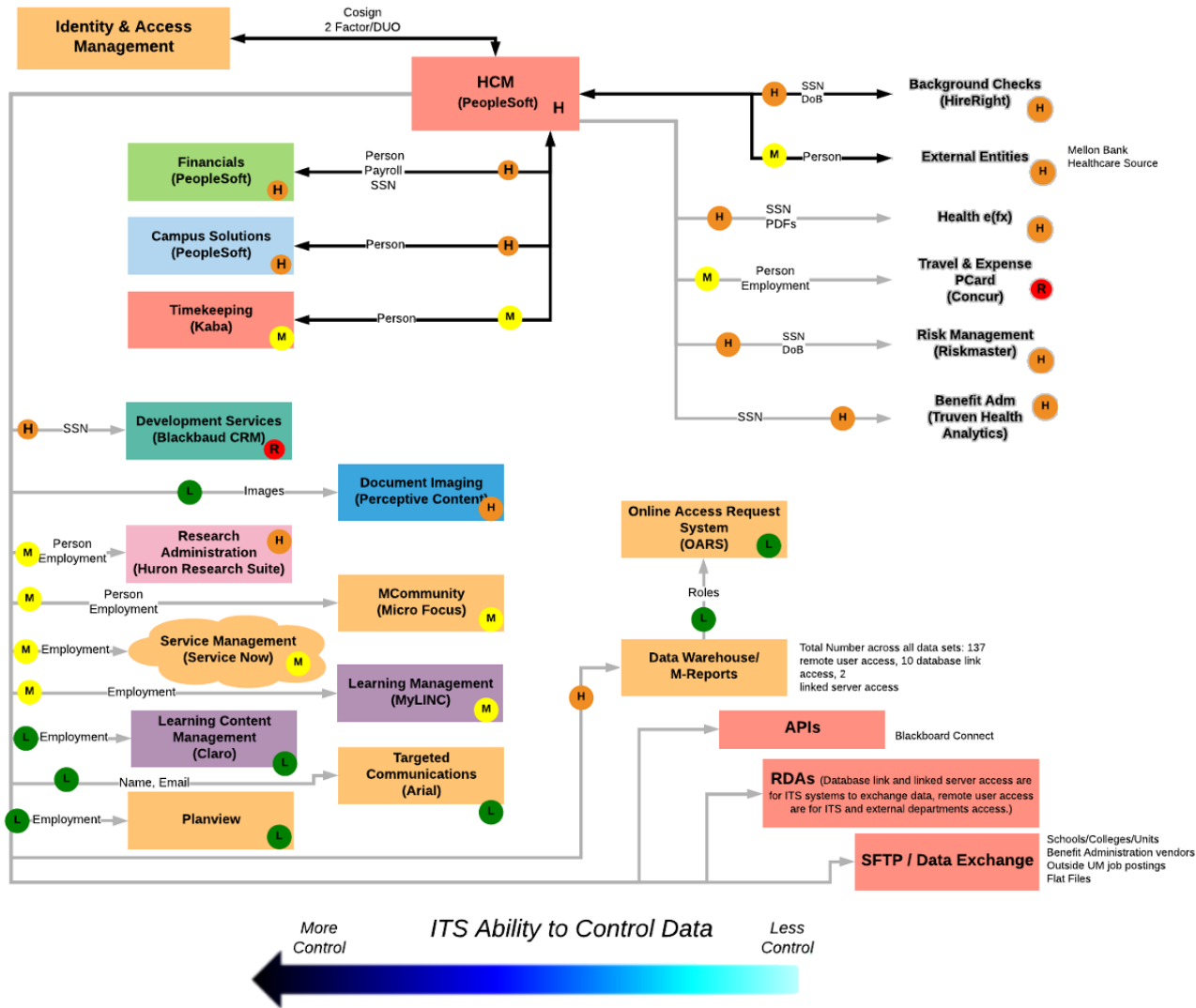


“Where is our Data”

Create and disseminate knowledge:

- where our data is stored,
- how it is used,
- how it is classified, governed and secured, and
- how it can be leveraged

...in order to empower campus use of our data.



Where is our Data? Enterprise Human Capital Management

Draft for Review

Human Capital Management by the numbers
PeopleSoft HCM. Emergency Alerts. My LINC. Kaba. Claro LCMS

My LINC: 109K learning activities
 eRecruit: 313K job applications
 Payroll pays over \$3.6B in pay checks
 Hires/Rehires: 41K
 Emergency Alerts: over 100K emails sent in < 5 min
 W2: 64K employees enrolled in automated W2's
 19K open enrollment benefits changes

Most Sensitive Data Stored is High. SSN is stored.

Location of system users & data recipients:
Ann Arbor, Dearborn, Flint, Michigan Medicine

System Users:
 - Benefits: 734
 - Payroll: 1,023
 - Time and Labor: 71,104
 - Human Resources: 11,080
 - Campus Community: 1812
 - HE: 883
 - Employee Self-Service: 82,477

Total # of RDAs: 194 - includes DW and HCMProd
 Total # of Flat Files Exchanged:
 Total # of Interfaces: 59 (A&A SFTP = 70)

LEGEND

ITS Systems

- Finance
- Human Resources & Capital Management
- Student Admin
- Research Admin
- Development
- Learning Management
- IT Management
- Document Management
- System is External to ITS

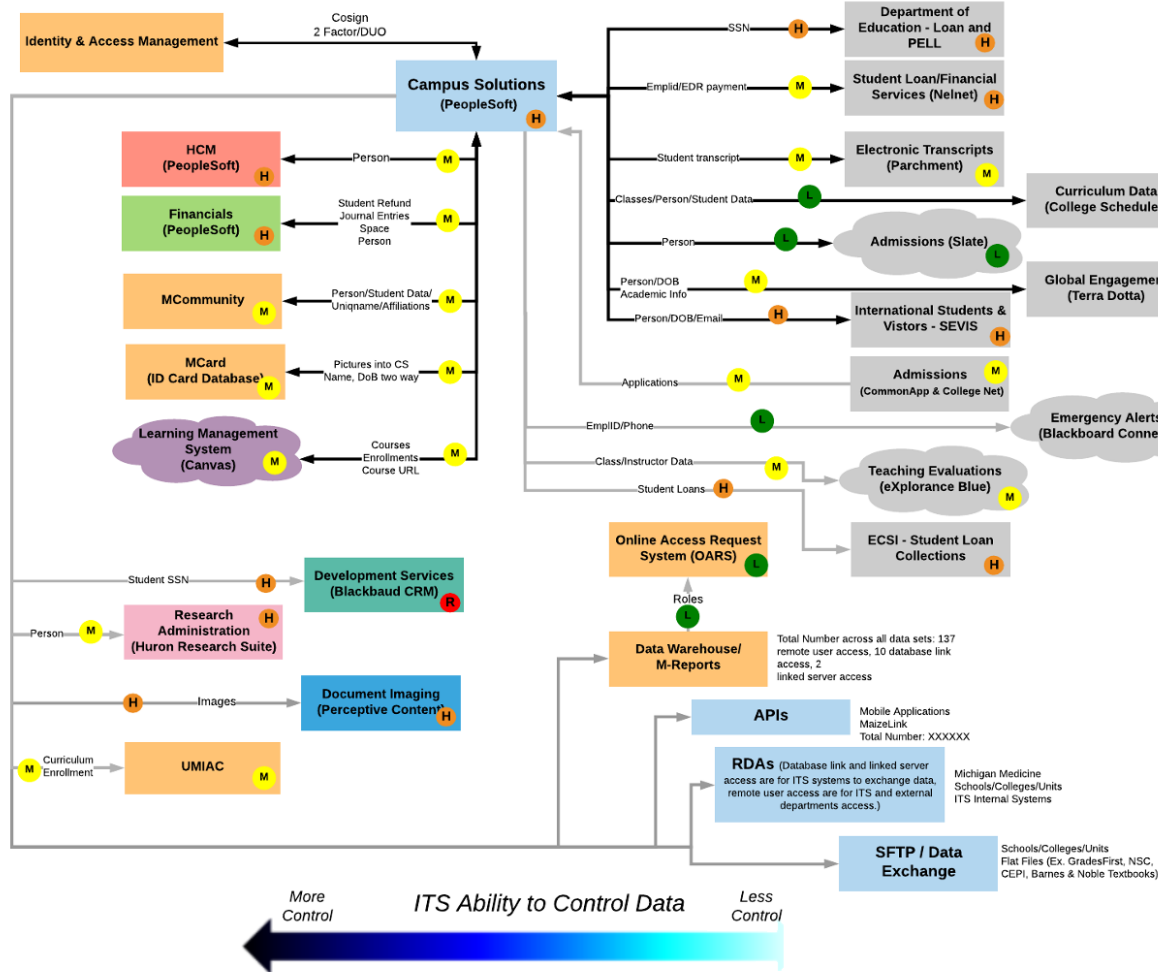
Data Flow

- Outbound Only
- Inbound Only
- Inbound & Outbound

Arrow Labels represent key examples of data that is exchanged, but does not capture a complete listing.

Sensitive Data Classification

- Restricted (R)
- High (H)
- Moderate (M)
- Low (L)



Where is our Data? Enterprise Campus Solutions

Draft for Review

Campus Solutions by the numbers
Recruiting & Admissions. Student Records, Curriculum & Academic Advisement. Financial Aid & Student Financials & Travel Registries.

Support **44,000** operational users
Self-Service access for **46K** students and **292K** alumni
Process **99,000** applications
Bill **\$1.5B** in tuition/Award **\$1B** in financial aid

Most Sensitive Data Stored is High.
SSN is stored.

Location of system users & data recipients:
Ann Arbor, Michigan Medicine

Total # of system users: XXXXX
Average # of system user logins/day: XXXX

Total # of APIs: XXXXX
Total # of RDAs: 42 remote user access, 11 database link access, 2 linked server access
Total # of Flat Files Exchanged: 78

LEGEND

ITS Systems

- Finance
- Human Resources & Capital Management
- Student Admin
- Research Admin
- Development
- Learning Management
- IT Management
- Document Management
- System is External to ITS

Data Flow

- Outbound Only
- Inbound Only
- Inbound & Outbound

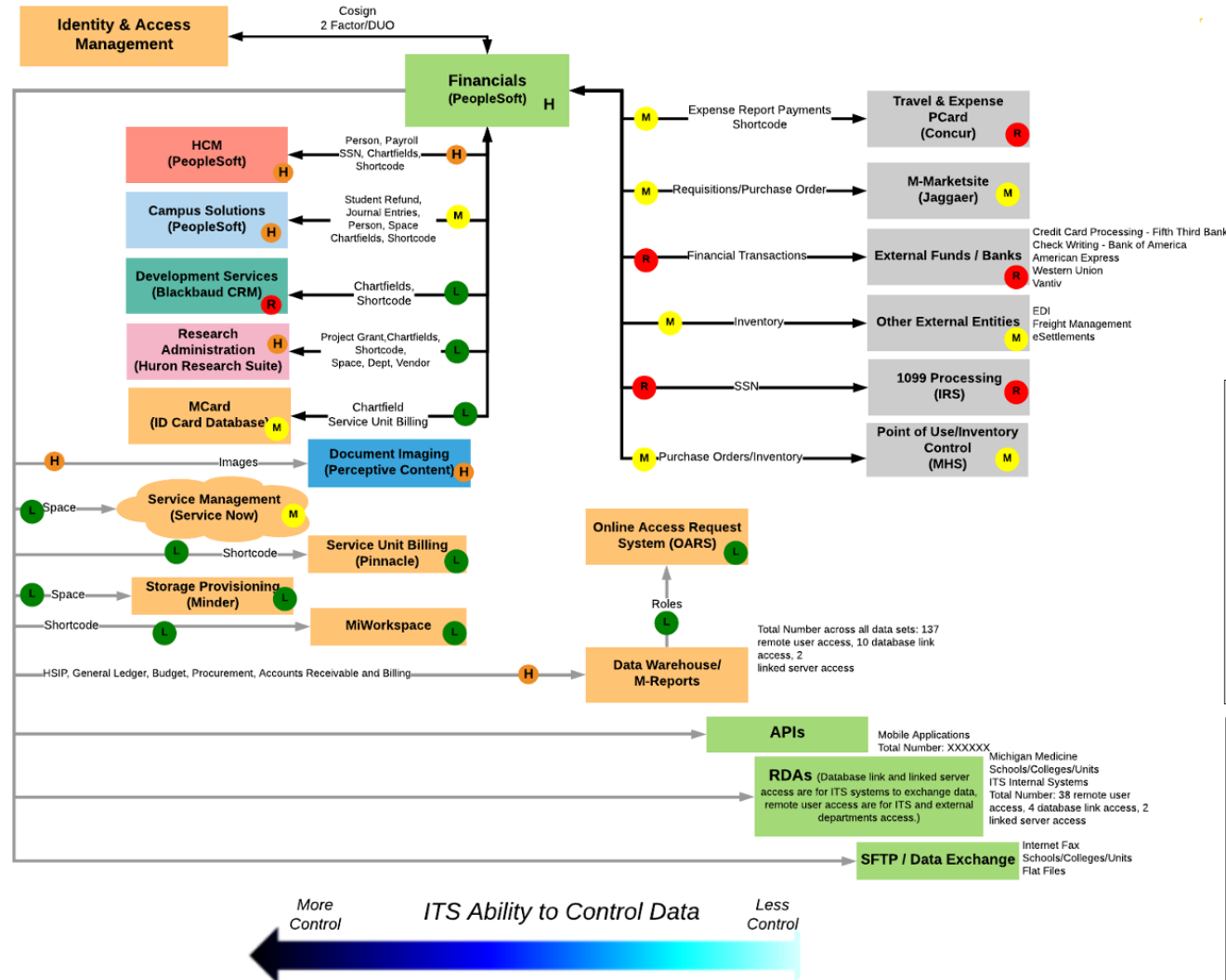
Arrow Labels represent key examples of data that is exchanged, but does not capture a complete listing.

Sensitive Data Classification

- Restricted (R)
- High (H)
- Moderate (M)
- Low (L)



Where is our Data? Enterprise Financials



Financials by the numbers
 Scope: Procure to Pay solutions, Inventory Management, Financials Suite, Space Management

Support for **14,000** Users
 Assistance for Financial Reporting
 Integrations to all major enterprise applications
118K Vendors; **450K** payments totaling **\$3.9B**
124K Assets; **821K** Journal Entries
15K A/R customers **\$324M** Billed

Most Sensitive Data Stored is High. SSN is stored.

Location of system users & data recipients: Ann Arbor, Dearborn, Flint, Michigan Medicine

Total # of system users: XXXXX
 Average # of system user logins/day: XXXX

Total # of APIs: XXXXX
 Total # of RDAs: 38
 Total # of Flat Files Exchanged: 62

LEGEND

ITS Systems

- Finance
- Human Resources & Capital Management
- Student Admin
- Research Admin
- Development
- Learning Management
- IT Management
- Document Management
- System is External to ITS

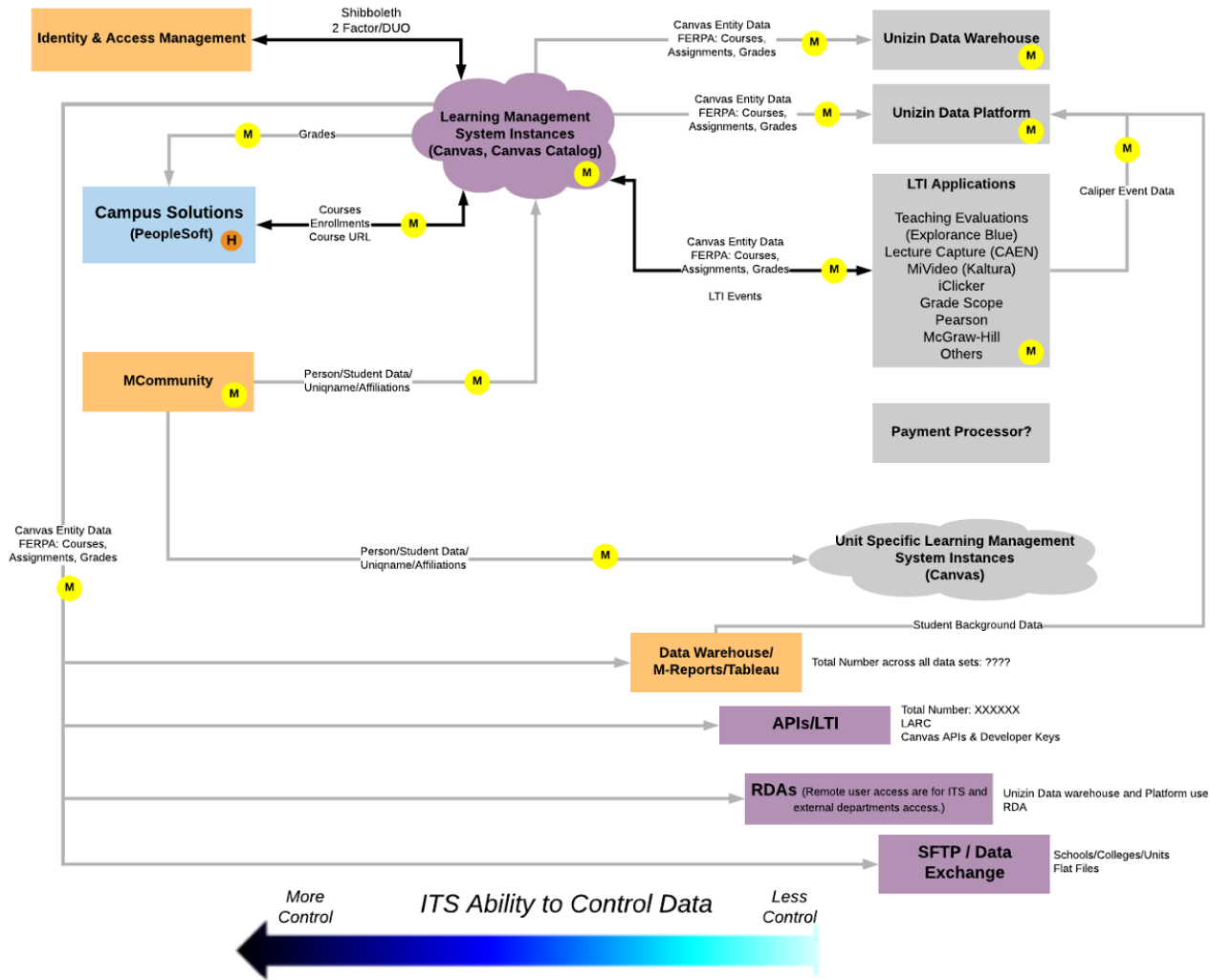
Data Flow

- Outbound Only
- Inbound Only
- Inbound & Outbound

Arrow Labels represent key examples of data that is exchanged, but does not capture a complete listing.

Sensitive Data Classification

- Restricted (R)
- High (H)
- Moderate (M)
- Low (L)



Where is our Data? Canvas

Canvas by the numbers
 There are multiple instances of Canvas used across the Ann Arbor Campus
 Say something about CTools and UMIAC here?
 Most Sensitive Data Stored is Moderate.
 Location of system users & data recipients:
 Ann Arbor, Michigan Medicine
 Total # of system users: XXXXX
 # of Active Course Sites Average per Term:
 # of Instances:
 Average # of system user logins/day: XXXX
 Total # of APIs: XXXXX
 Total # of RDAs: XXXXX
 Total # of Flat Files Exchanged: XXXXX

LEGEND

ITS Systems

- Finance
- Human Resources & Capital Management
- Student Admin
- Research Admin
- Development
- Learning Management
- IT Management
- Document Management
- System is External to ITS

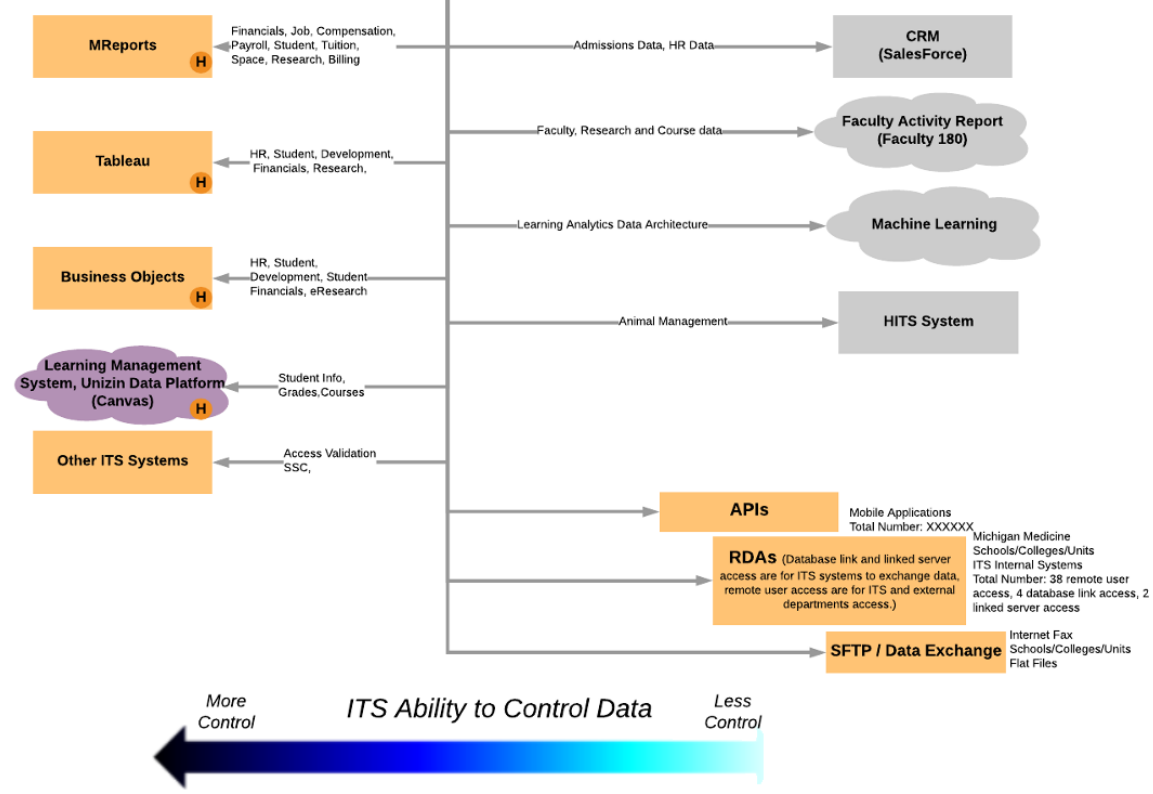
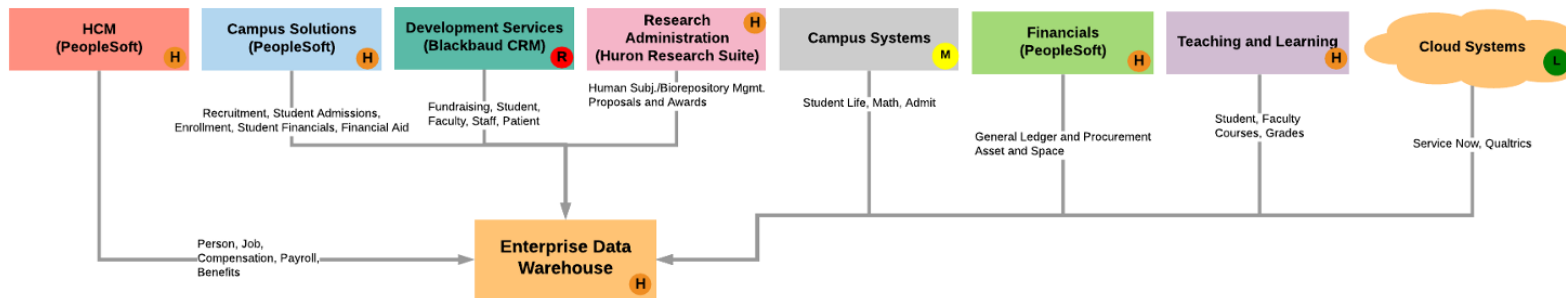
Data Flow

- Outbound Only
- Inbound Only
- Inbound & Outbound

Arrow Labels represent key examples of data that is exchanged, but does not capture a complete listing.

Sensitive Data Classification

- Restricted (R)
- High (H)
- Moderate (M)
- Low (L)



Where is our Data? Enterprise Data Warehouse

Data Warehouse by the numbers
 Scope: Human Capital Management, Campus Solutions, Financial, Development, and eResearch

Active Users (get numbers from logs)
 Assistance for all reporting
 Integrations to all major enterprise applications

Most Sensitive Data Stored is High. SSN is stored.

Location of system users & data recipients: Ann Arbor, Dearborn, Flint, Michigan Medicine

Total # of system users: XXXXX
 Average # of system user logins/day: XXXX

Total # of APIs: XXXXX
 Total # of RDAs: 38
 Total # of Flat Files Exchanged: XX

LEGEND

ITS Systems

- Finance
- Human Resources & Capital Management
- Student Admin
- Research Admin
- Development
- Learning Management
- IT Management
- Document Management
- System is External to ITS

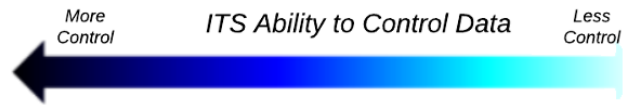
Data Flow

- Outbound Only
- Inbound Only
- Inbound & Outbound

Arrow Labels represent key examples of data that is exchanged, but does not capture a complete listing.

Sensitive Data Classification

- Restricted (R)
- High (H)
- Moderate (M)
- Low (L)





RICE UNIVERSITY



Approach

- Crawl, Walk, and Run.
- Start small; grow in manageable increments.
- Measure results before investing more.
- Leverage existing systems by adding analysis and viz tools.
- Under-promise; Over-deliver.



RICE UNIVERSITY

Pulse Check



- Great tools
- Great project
- Outstanding deliverables
- Is anyone using them?
- Can you show ROI?





Criteria for Success?

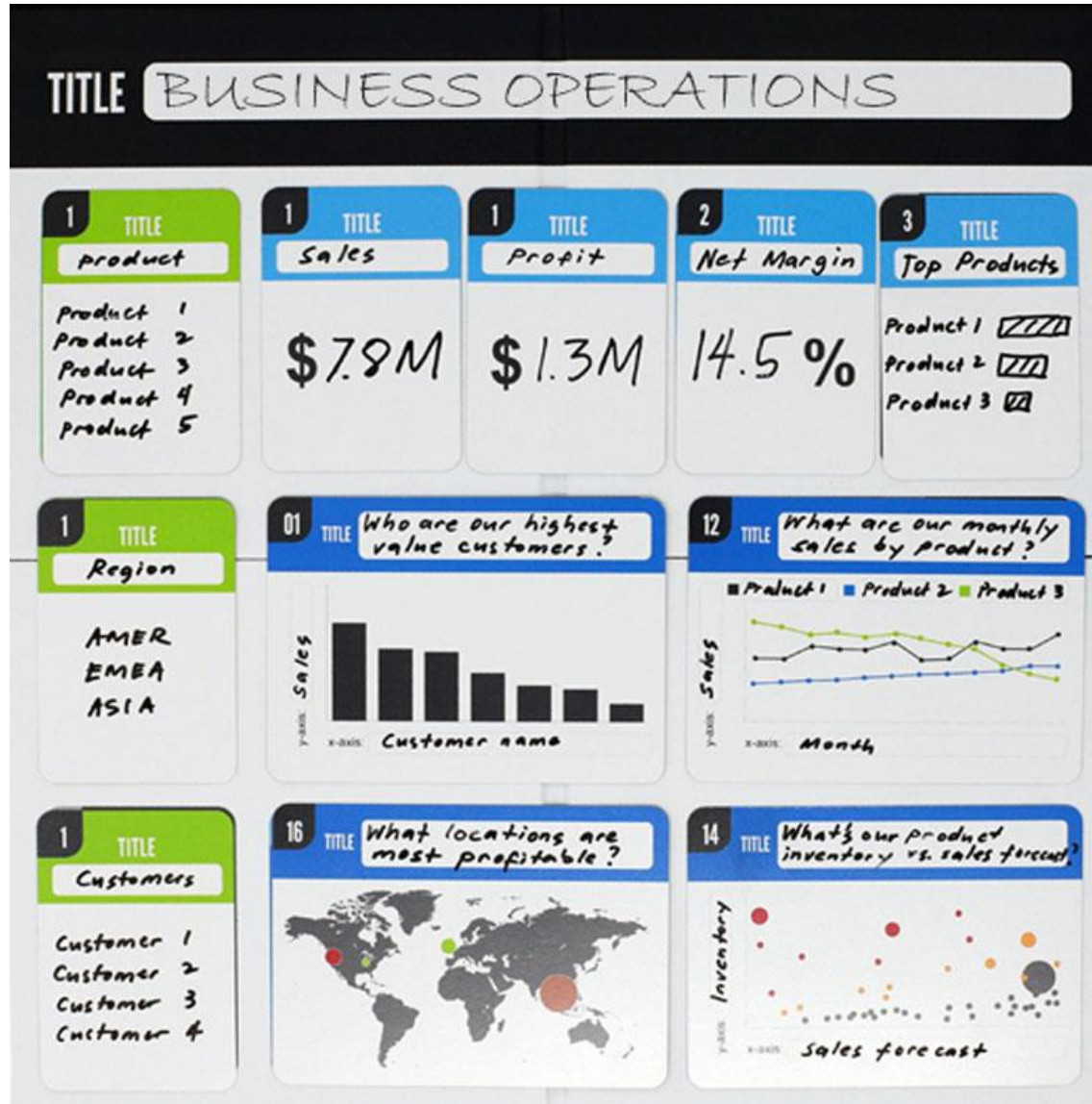
- Business users actually use the product
- Analysis and reports solve analysis and information needs
- Decision makers save resources
- Analysis produces cost-savings or other efficiencies




Lessons Learned

- BI / Analytics Success - more than technology
- Right tools for the right processes - storyboarding
- A structured process optimizes results
- Timeliness and PoC is the key
- ROI is worth the effort
- Business / campus and **not** IT driver





Storyboarding Example





RICE UNIVERSITY

Welcome to the Rice University Analytics Dashboard

Explore insights, track progress, and empower decision-making with our intuitive interface tailored for the RICE community

Open Data Dashboard



Rice At A Glance



My Reports



Total Enrollment

8,471



Schools

8



Majors

109



Sponsored Research

\$ 187.3M



Faculty, Staff & Research

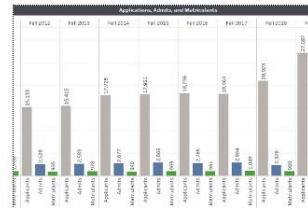
3,961



Institutional Research Reports

Current and longitudinal reports concerning Rice's students, faculty, staff, alumni, and financial resources are available to the public. Requests for additional information should be sent to oirhelp@rice.edu.

^ Admission Statistics (4)



Undergraduate Admissions Statistics

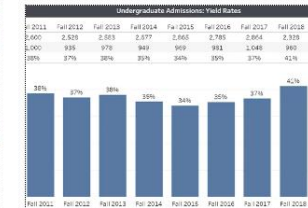
The report includes the number applications, admissions offers, and enrollments for first-time degree-seeking undergraduates.

Test Score (Percentiles)									
	Fall 2011		Fall 2012		Fall 2013		Fall 2014		
	25th	75th	25th	75th	25th	75th	25th	75th	
750	680	780	700	780	700	790	720	790	
750	650	750	660	750	670	760	680	760	
760	650	760	660	760	670	770	670	770	
34	30	34	30	34	31	34	31	34	

Fall 2017					Fall 2018				
	25th		75th			25th		75th	
Writing	730	780	700	760	720	760	700	760	720
	760	800	750	800	750	790	740	790	750
	33	35	33	35	33	35	33	35	33

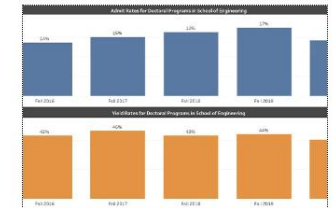
Undergraduate Test Scores

This report includes historical SAT and ACT test scores for first-time, full-time freshmen entering Rice University.



Undergraduate Yield Rates

The report includes admissions offers, enrollments, and yield rates for first-time degree-seeking undergraduates.



Graduate Admissions Statistics

This report shows admit and yield rates by school. Jones Graduate School of Business is excluded from this report.

✓ Enrollment Statistics (3)

✓ Undergraduate and Graduate Achievement Data (8)

✓ Alumni (4)

✓ Faculty and Staff (4)

✓ Financial Resources (2)



I humbly
THANK YOU

Vijay Thiruvengadam

tvijay@rice.edu

www.linkedin.com/in/tvijay



RICE UNIVERSITY